



Sparklines Pro

How to insert a sparkline in an Excel worksheet?

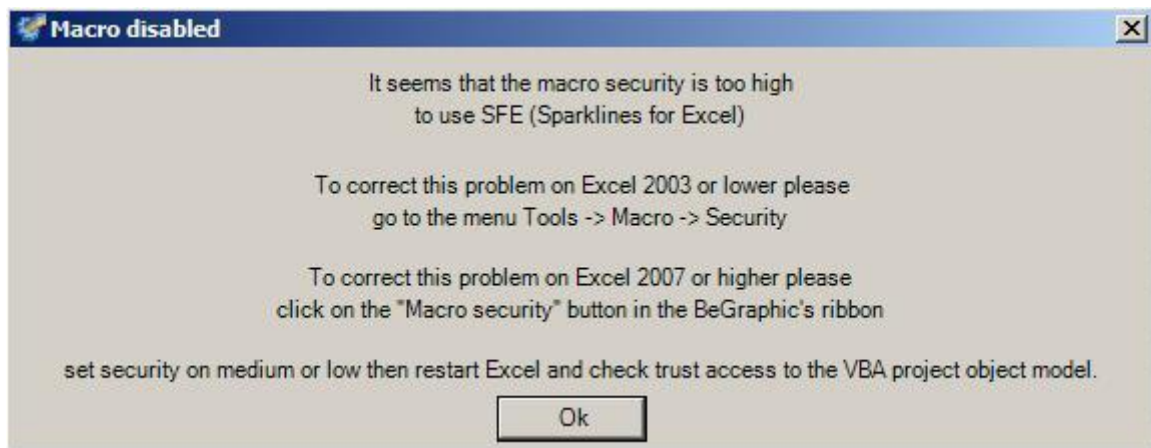
Step 1

Prepare your data in Excel

Step 2

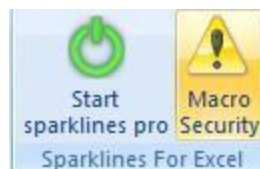
Click on the "Start sparklines pro" button in the BeGraphic ribbon.

You may have the following message:

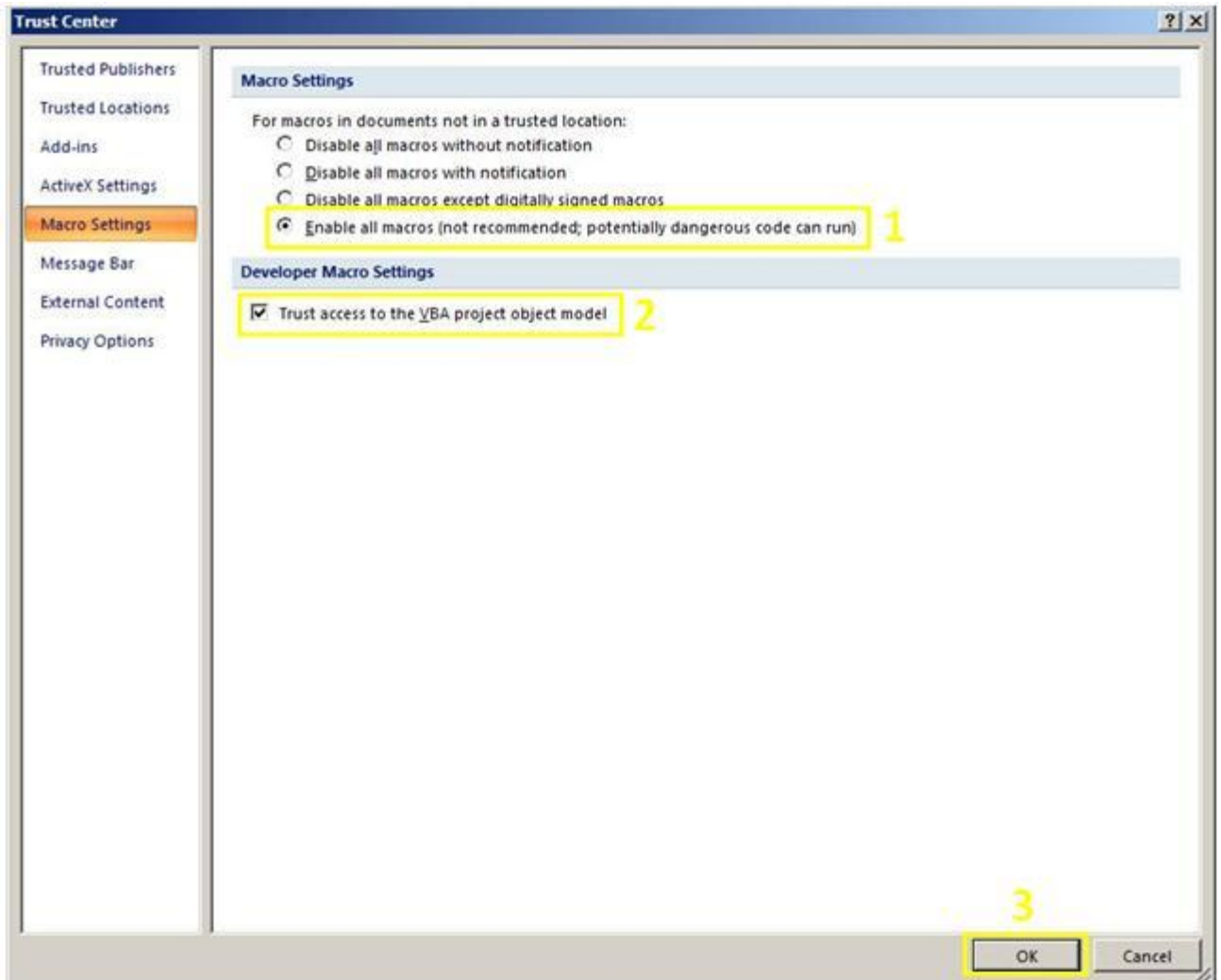


If this window appears, check that macros are enabled. To change macros settings, follow the procedure:

1: Click on the "Macro security" button in the BeGraphic ribbon.



2: Check if macros are enabled and trust access to the VBA project is checked.



3: Restart Excel.

Step 3 Click on “Insert SFE” and select the type that you are interested in.



Step 4 Set up BeGraphic by filling parameters (e.g.: Points1, Points2...).

Tip & tricks: if you drag down a formula containing sparklines, use the “refresh” function.