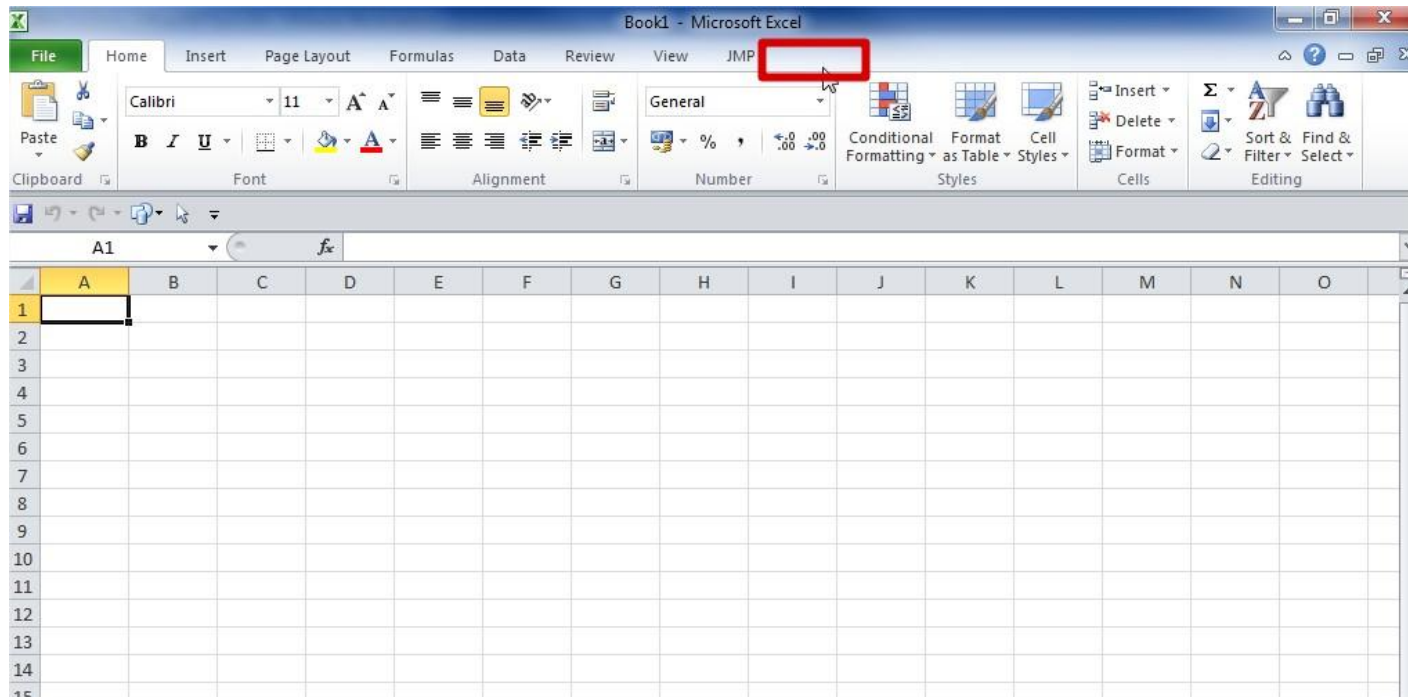


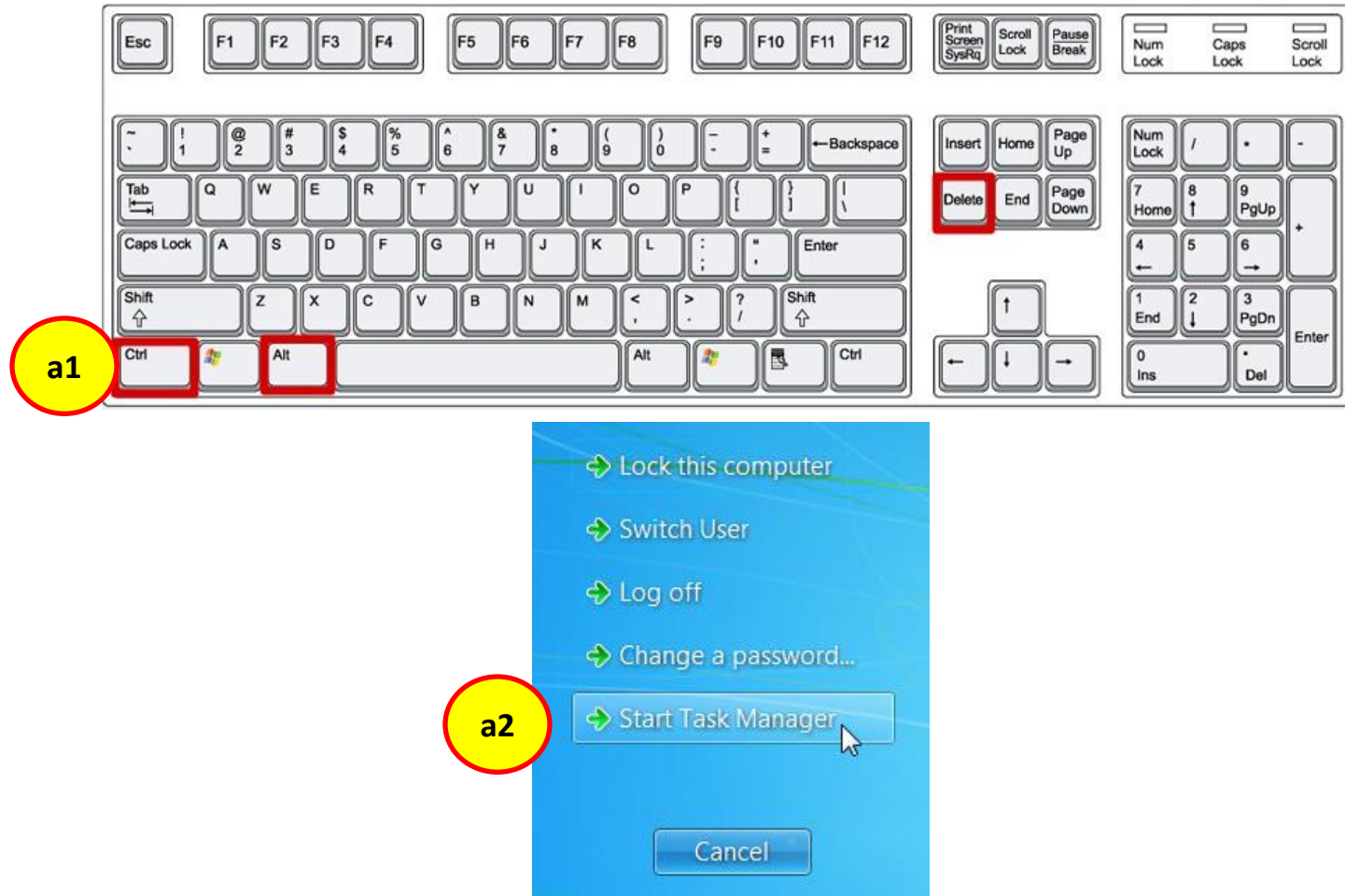
BeGraphic Add-in:

How to do to display it



Solution 1

Solution 1:



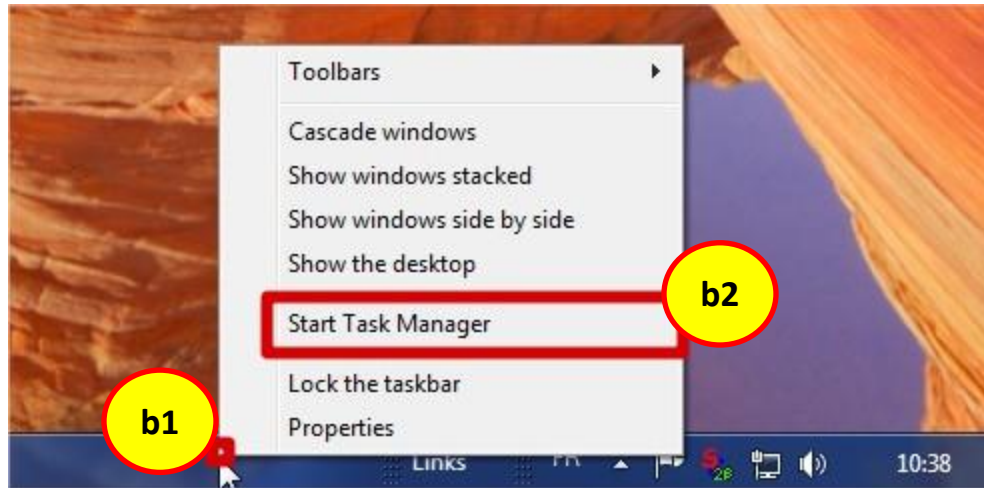
1. Open the Task Manager

a. Way 1:

a1. *Ctrl+Alt+Del* or *Ctrl+Alt+Suppr*

a2. Select "Start Task Manager"

Solution 1:



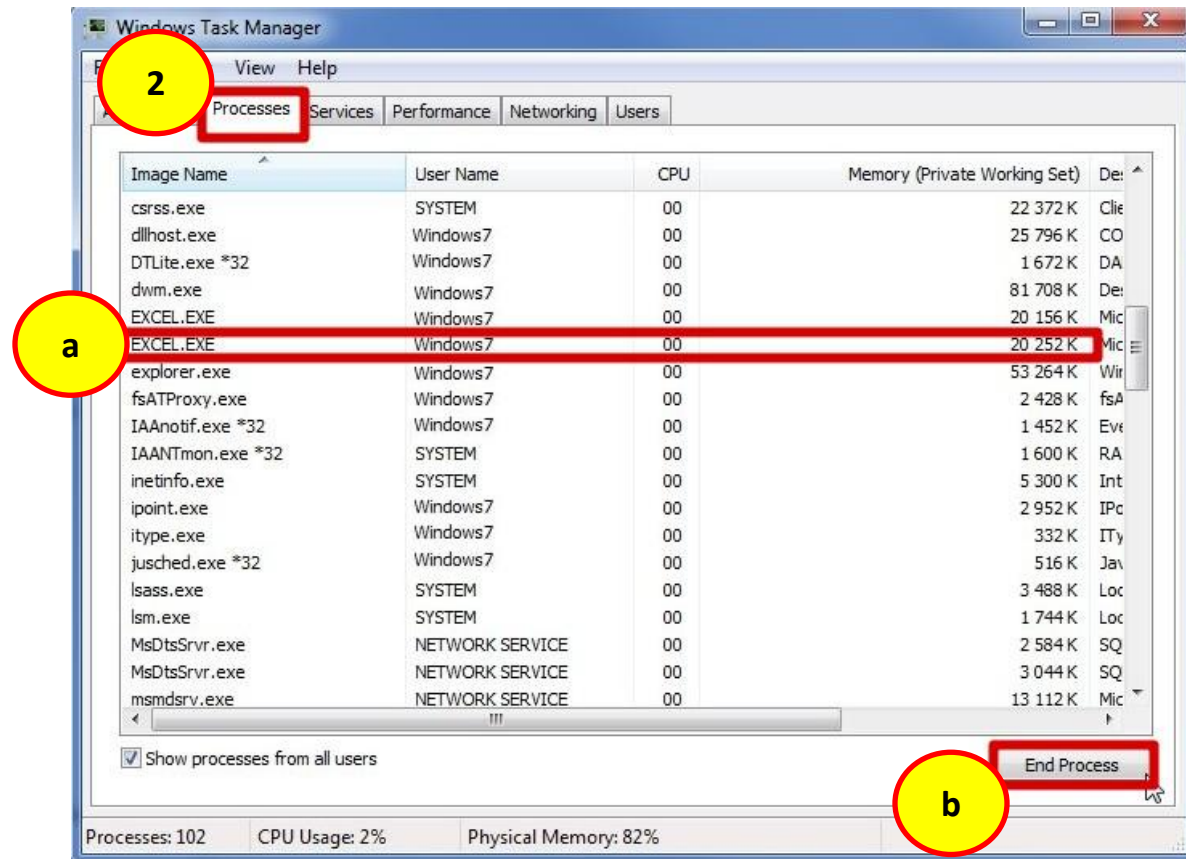
1. Open the Task Manager

b. Way 2:

b1. Right-click on the Windows taskbar

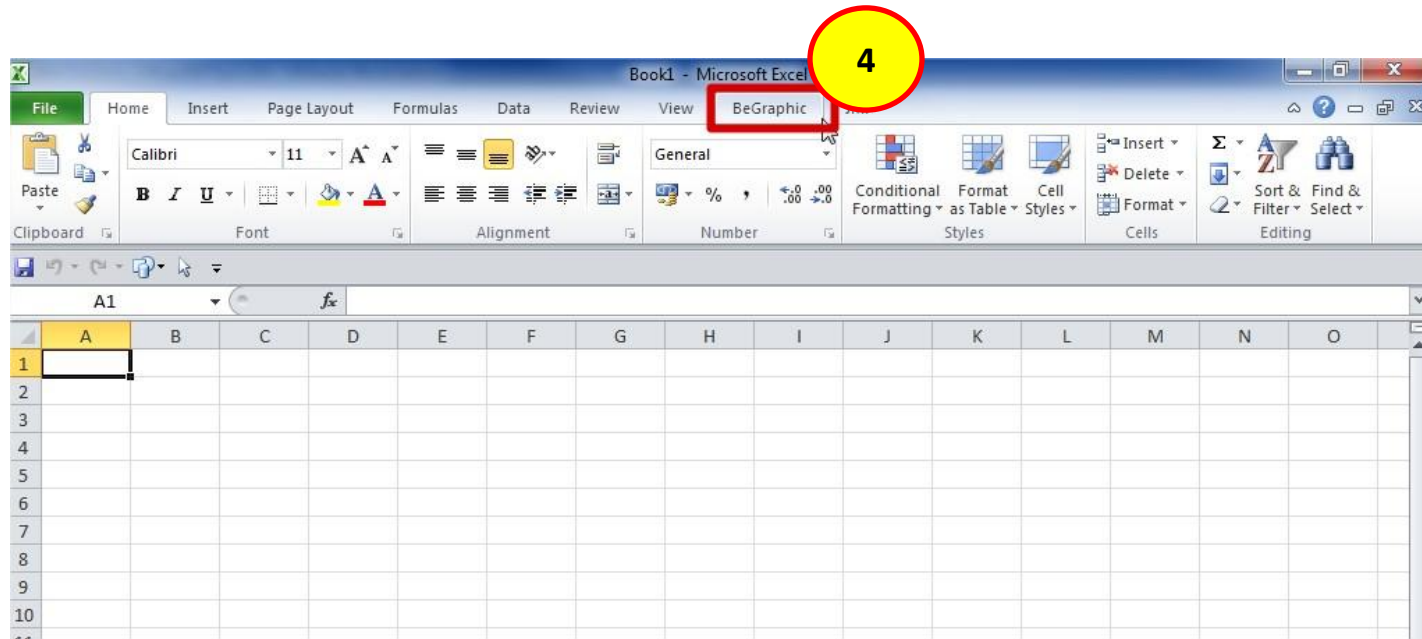
b2. On the menu, select " Start Task Manager"

Solution 1:



2. At the top of the window "Windows Task Manager", select the tab "Processes"
3. On the column "Image Name":
 - a. Locate all the instances "EXCEL.EXE"
 - b. For stopping them:
 - b1. Select an instance
 - b2. Bottom right, press the "End Process"
 - c. Repeat the manipulation for each instance

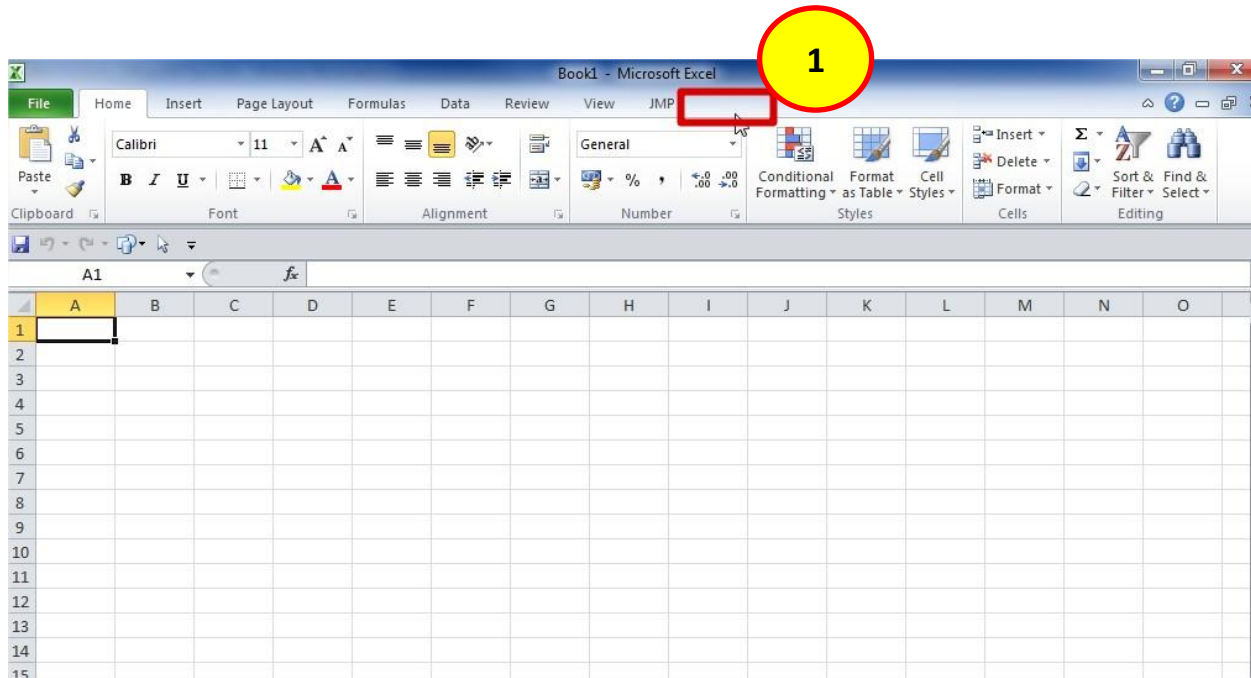
Solution 1:



4. Now, open your Excel file set by BeGraphic. The Add-in BeGraphic will be present

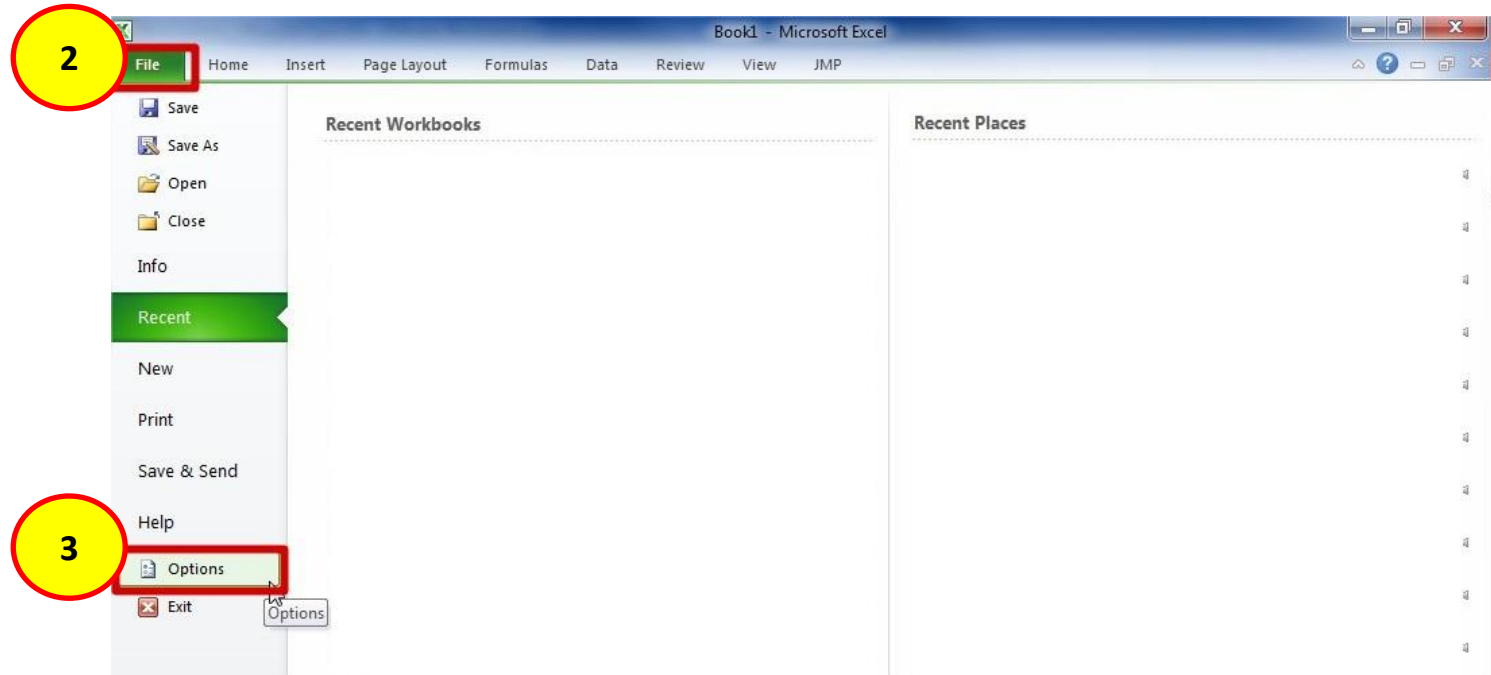
Solution 2

Solution 2:



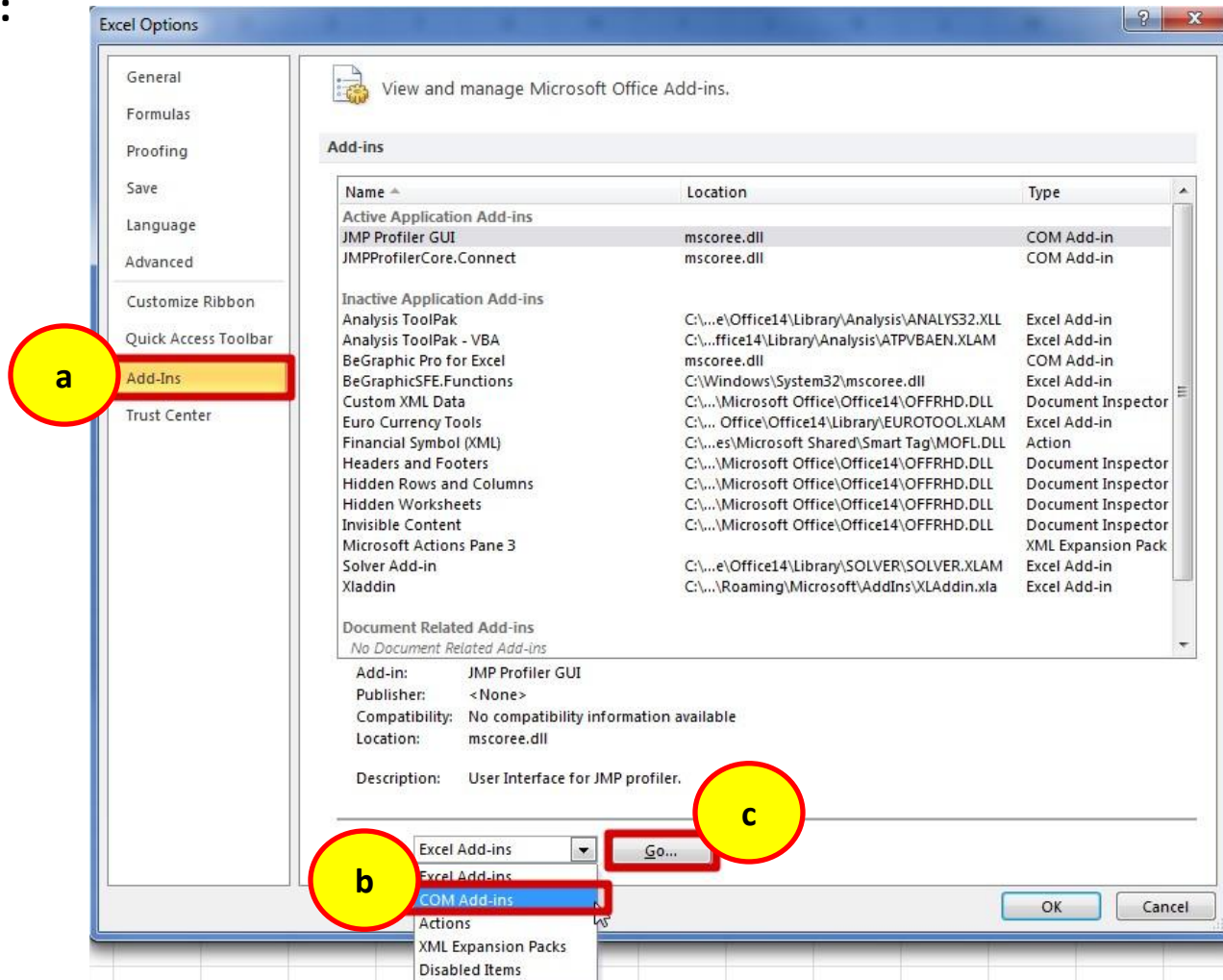
1. Hiding the Add-in BeGraphic

Solution 2:



2. On the Excel menu, click on "File"
3. On the File menu, select "Options"

Solution 2:



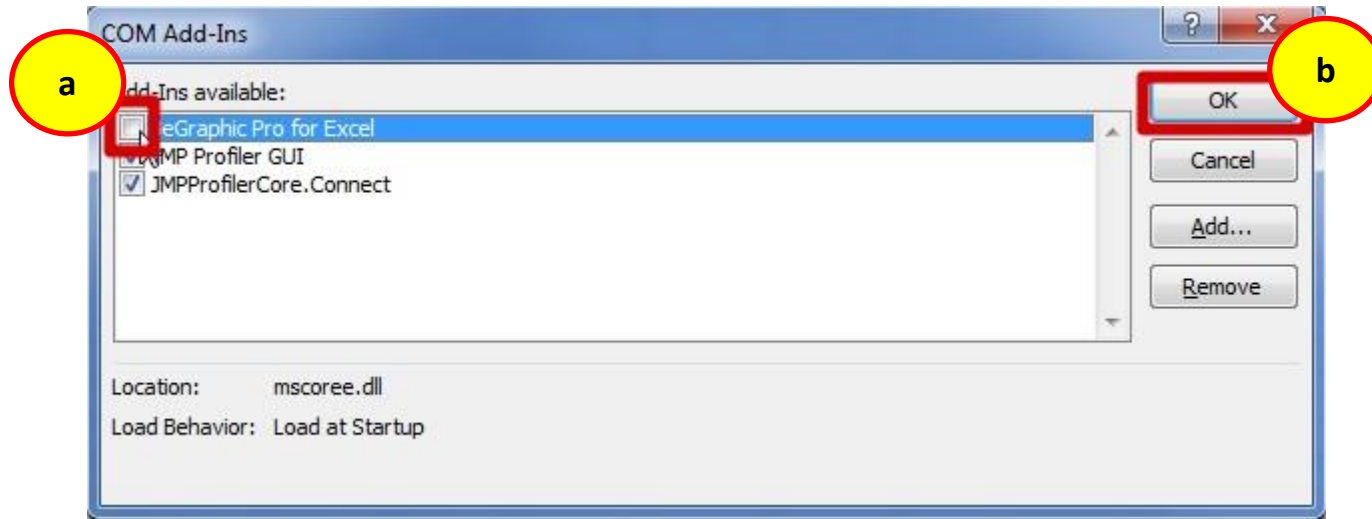
4. On Excel Options window:

a. On the left menu, click on "Add-Ins"

b. At the bottom, on the combo box "Manage", select "COM Add-ins"

c. Press the button "Go..."

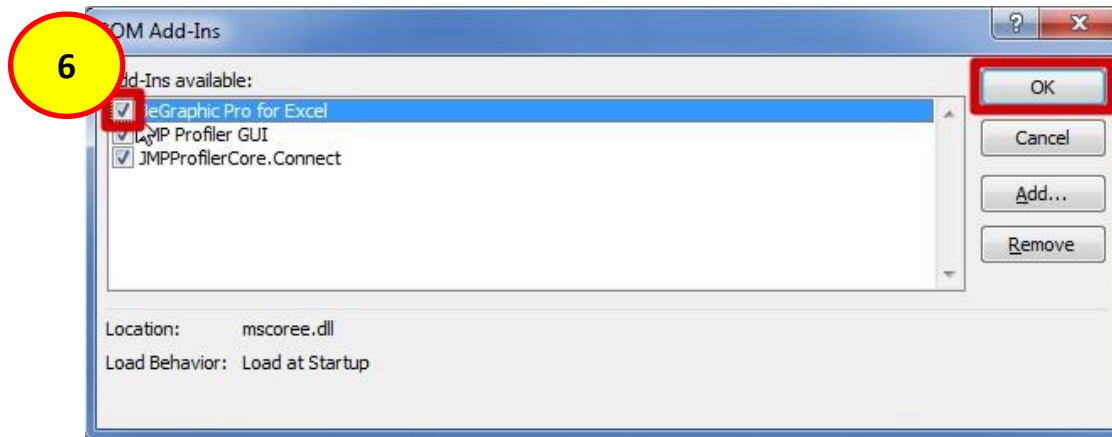
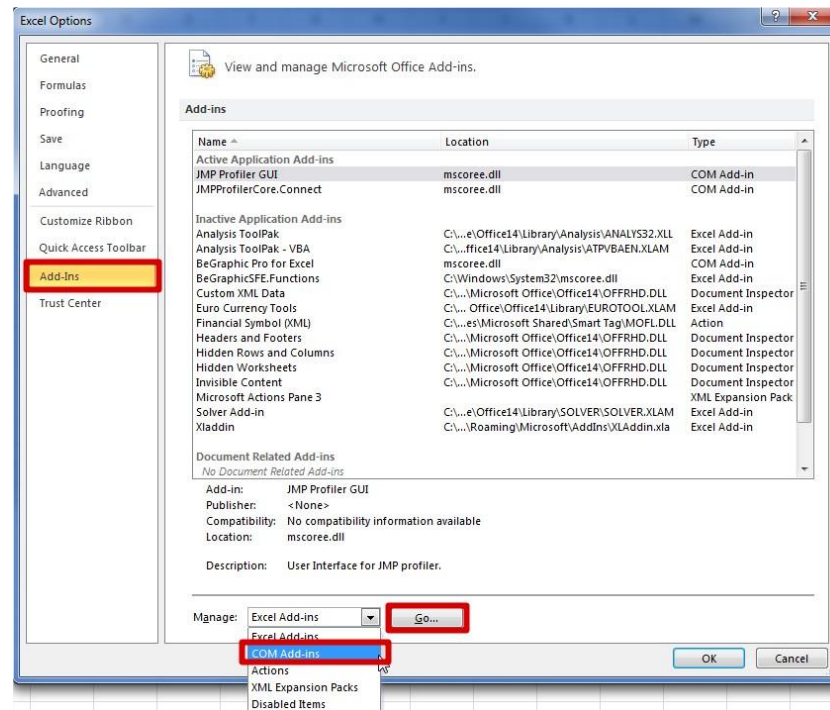
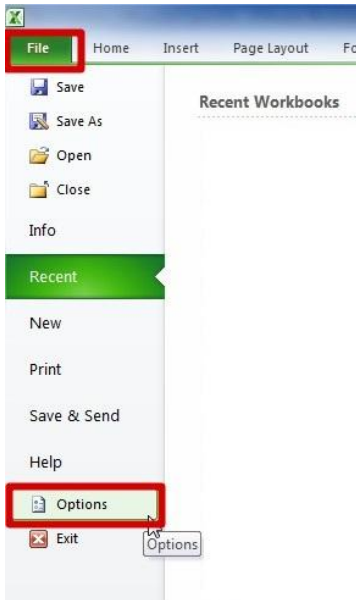
Solution 2:



5. On COM Add-Ins window:

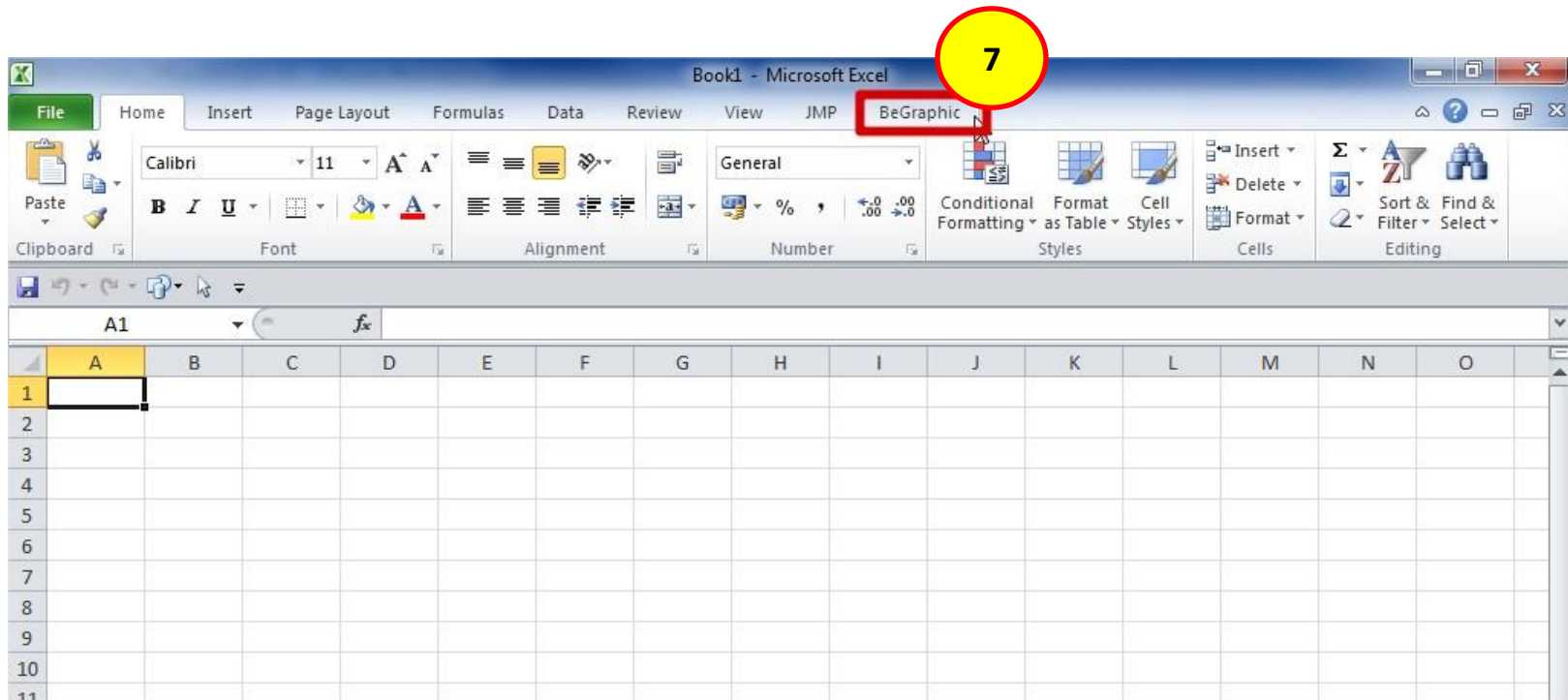
- a. Unchecked "BeGraphic Pro for Excel"
- b. Press the button "OK"

Solution 2:



6. Repeat the same procedure (2. To 5.) And recheck the box "BeGraphic Pro for Excel"

Solution 2:



7. You should find to appear in the Add-BeGraphic